



扫二维码  
关注谱尼测试



Pony Testing International Group

报告编号(Report ID): MLIBCBLU92384721

# UN38.3 测试报告

## UN38.3 Test Report

Sample Description & Model	Lithium ion battery 1830 3.2V 500mAh 1.6Wh
Applicant	Hunan Huahui New Energy Co., Ltd
Manufacturer	Hunan Huahui New Energy Co., Ltd



No.: MLIBCBLU92384721  
Code: t5zw9bj0





Pony Testing International Group

## I、SAMPLE DESCRIPTION

Sample Description	Lithium ion battery		Sample Model	1830 3.2V 500mAh 1.6Wh	
Applicant	Hunan Huahui New Energy Co., Ltd				
Manufacturer	Hunan Huahui New Energy Co., Ltd				
Nominal Voltage	3.2V	Rated Capacity	500mAh	Limited Charge Voltage	3.75V
Charge Current	250mA	Maximum Continuous Charge Current	500mA	End Charge Current	6mA
Cut-off Voltage	2.3V	Maximum Discharge Current	500mA	Use	---
Cell Number In Each Battery	1PCS	Cell Model	1830	Cell Capacity	500mAh
Electrochemistry System	LiFePO <sub>4</sub>				
Manufacturer of cell	Hunan Huahui New Energy Co., Ltd				
Entrust date	2017-03-20		Finished date	2017-04-06	

## II、TEST METHOD

UNITED NATIONS "Recommendations on the TRANSPORT OF DANGEROUS GOODS" Manual of Tests and Criteria (ST/SG/AC.10/11/Rev.6), Part III sub-section.

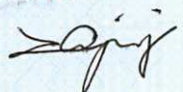
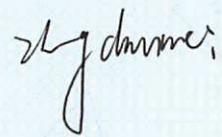
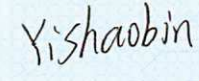
## III、TEST ITEM

- |                        |                           |
|------------------------|---------------------------|
| 1. Altitude simulation | 5. External short circuit |
| 2. Thermal test        | 6. Impact                 |
| 3. Vibration           | 7. Overcharge             |
| 4. Shock               | 8. Forced discharge       |

## IV、CONCLUSION

ITEM	SAMPLE NUMBER	STANDARD	CONCLUSION
Altitude simulation	N1~N10	UN38.3 ST/SG/AC.10/11/Rev.6	PASS
Thermal test			PASS
Vibration			PASS
Shock			PASS
External short circuit			PASS
Impact	N11~N15		PASS
Overcharge	---		N/A (Not applicable)
Forced discharge	N16~N25 C1~C10		PASS

The Samples has passed the test items of UNITED NATIONS "Recommendations on the TRANSPORT OF DANGEROUS GOODS" Manual of Tests and Criteria (ST/SG/AC.10/11/Rev.6), Part III sub-section.

Appraiser: Checker: Approver: 

Issue Date: April 06, 2017

www.ponytest.com

Hotline 400-819-5688

**PONY 谱尼测试**  
 Pony Testing International Group

 谱尼测试集团深圳有限公司  
 深圳市南山区创业路中兴工业城六栋一层

北京实验室: (010) 82618116	长春实验室: (0431) 85150908	上海实验室: (021) 64851999	深圳实验室: (0755) 26050909
青岛实验室: (0532) 88706866	哈尔滨实验室: (0451) 88104651	宁波实验室: (0574) 87736499	广州实验室: (020) 89224310
天津实验室: (022) 27360730	大连实验室: (0411) 84650820	杭州实验室: (0571) 87219096	武汉实验室: (027) 83997127
新疆实验室: (0991) 6684186	郑州实验室: (0371) 69350670	苏州实验室: (0512) 62997900	厦门实验室: (0592) 5568048



Pony Testing International Group

### Notes:

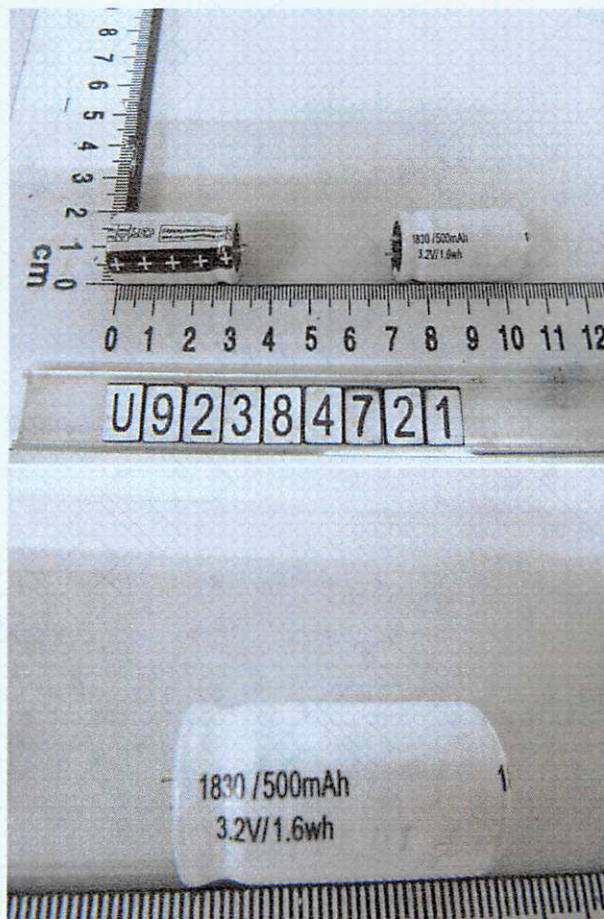
N1~N10: Cells at first cycle in fully charged states;

N11~N15: Cells at first cycle at 50% of the design rated capacity;

N16~N25: Cells at first cycle in fully discharged states;

C1~C10: Cells after 50 cycles ending in fully discharged states.

### V、 PHOTO OF THE SAMPLE



Authenticate the photo on original report only



Pony Testing International Group

## VI、 TEST METHOD

Tests T.1 to T.5 shall be conducted in sequence on the same cell or battery. Tests T.6 and T.8 shall be conducted using not otherwise tested cells or batteries. Test T.7 may be conducted using undamaged batteries previously used in tests T.1 to T.5 for purposes of testing on cycled batteries.

In order to quantify the mass loss, the following procedure is provided:

$$\text{Mass loss(\%)} = (M_1 - M_2) / M_1 \times 100$$

Where  $M_1$  is the mass before the test and  $M_2$  is the mass after the test. When mass loss does not exceed the values in Table blow, it shall be considered as “no mass loss”.

Mass M of cell or battery	Mass loss limit
$M < 1g$	0.5%
$1g \leq M \leq 75g$	0.2%
$M > 75g$	0.1%

### T.1 Altitude simulation

Test cells and batteries shall be stored at a pressure of 11.6 kPa or less for at least six hours at ambient temperature ( $20 \pm 5 \text{ }^\circ\text{C}$ ).

Cells and batteries meet this requirement if there is no leakage, no venting, no disassembly, no rupture and no fire and if the open circuit voltage of each test cell or battery after testing is not less than 90% of its voltage immediately prior to this procedure. The requirement relating to voltage is not applicable to test cells and batteries at fully discharged states.

### T.2 Thermal test

Test cells and batteries are to be stored for at least six hours at a test temperature equal to  $72 \pm 2 \text{ }^\circ\text{C}$ , followed by storage for at least six hours at a test temperature equal to  $-40 \pm 2 \text{ }^\circ\text{C}$ . The maximum time interval between test temperature extremes is 30 minutes. This procedure is to be repeated until 10 total cycles are complete, after which all test cells and batteries are to be stored for 24 hours at ambient temperature ( $20 \pm 5 \text{ }^\circ\text{C}$ ). For large cells and batteries the duration of exposure to the test temperature extremes should be at least 12 hours.

Cells and batteries meet this requirement if there is no leakage, no venting, no disassembly, no rupture and no fire and if the open circuit voltage of each test cell or battery after testing is not less than 90% of its voltage immediately prior to this procedure. The requirement relating to voltage is not applicable to test cells and batteries at fully discharged states.

www.ponytest.com ©Hotline 400-819-5688

北京实验室: (010) 82618116 长春实验室: (0431) 85150908 上海实验室: (021) 64851999 深圳实验室: (0755) 26050909  
 青岛实验室: (0532) 88706866 哈尔滨实验室: (0451) 88104651 宁波实验室: (0574) 87736499 广州实验室: (020) 89224310  
 天津实验室: (022) 27360730 大连实验室: (0411) 84650820 杭州实验室: (0571) 87219096 武汉实验室: (027) 83997127  
 新疆实验室: (0991) 6684186 郑州实验室: (0371) 69350670 苏州实验室: (0512) 62997900 厦门实验室: (0592) 5568048



Pony Testing International Group

### T.3 Vibration

Cells and batteries are firmly secured to the platform of the vibration machine without distorting the cells in such a manner as to faithfully transmit the vibration. The vibration shall be a sinusoidal waveform with a logarithmic sweep between 7 Hz and 200 Hz and back to 7 Hz traversed in 15 minutes. This cycle shall be repeated 12 times for a total of 3 hours for each of three mutually perpendicular mounting positions of the cell. One of the directions of vibration must be perpendicular to the terminal face.

The logarithmic frequency sweep shall differ for cells and batteries with a gross mass of not more than 12 kg (cells and small batteries), and for batteries with a gross mass of more than 12 kg (large batteries).

For cells and small batteries: from 7 Hz a peak acceleration of 1  $g_n$  is maintained until 18 Hz is reached. The amplitude is then maintained at 0.8 mm (1.6 mm total excursion) and the frequency increased until a peak acceleration of 8  $g_n$  occurs (approximately 50 Hz).

A peak acceleration of 8  $g_n$  is then maintained until the frequency is increased to 200 Hz.

For large batteries: from 7 Hz to a peak acceleration of 1  $g_n$  is maintained until 18 Hz is reached. The amplitude is then maintained at 0.8 mm (1.6 mm total excursion) and the frequency increased until a peak acceleration of 2  $g_n$  occurs (approximately 25 Hz). A peak acceleration of 2  $g_n$  is then maintained until the frequency is increased to 200 Hz.

Cells and batteries meet this requirement if there is no leakage, no venting, no disassembly, no rupture and no fire during the test and after the test and if the open circuit voltage of each test cell or battery after testing in its perpendicular mounting position is not less than 90% of its voltage immediately prior to this procedure. The requirement relating to voltage is not applicable to test cells and batteries at fully discharged states.

### T.4 Shock

Test cells and batteries shall be secured to the testing machine by means of a rigid mount which will support all mounting surfaces of each test battery.

Each cell shall be subjected to a half-sine shock of peak acceleration of 150  $g_n$  and pulse duration of 6 milliseconds. Alternatively, large cells may be subjected to a half-sine shock of peak acceleration of 50  $g_n$  and pulse duration of 11 milliseconds.

Each battery shall be subjected to a half-sine shock of peak acceleration depending on the mass of the battery. The pulse duration shall be 6 milliseconds for small batteries and 11 milliseconds for large batteries. The formulas below are provided to calculate the appropriate minimum peak accelerations.

www.ponytest.com

☎Hotline 400-819-5688

北京实验室: (010) 82618116  
 青岛实验室: (0532) 88706866  
 天津实验室: (022) 27360730  
 新疆实验室: (0991) 6684186

长春实验室: (0431) 85150908  
 哈尔滨实验室: (0451) 88104651  
 大连实验室: (0411) 84650820  
 郑州实验室: (0371) 69350670

上海实验室: (021) 64851999  
 宁波实验室: (0574) 87736499  
 杭州实验室: (0571) 87219096  
 苏州实验室: (0512) 62997900

深圳实验室: (0755) 26050909  
 广州实验室: (020) 89224310  
 武汉实验室: (027) 83997127  
 厦门实验室: (0592) 5568048



Pony Testing International Group

Battery	Minimum peak acceleration	Pulse duration
Small batteries	150 g <sub>n</sub> or result of formula	6 ms
	$\text{Acceleration}(g_n) = \sqrt{\left(\frac{100850}{\text{mass}^*}\right)}$	
Large batteries	Whichever is smaller	11 ms
	50 g <sub>n</sub> or result of formula	
	$\text{Acceleration}(g_n) = \sqrt{\left(\frac{30000}{\text{mass}^*}\right)}$	
	Whichever is smaller	

\* Mass is expressed in kilograms.

Each cell or battery shall be subjected to three shocks in the positive direction and to three shocks in the negative direction in each of three mutually perpendicular mounting positions of the cell or battery for a total of 18 shocks.

Cells and batteries meet this requirement if there is no leakage, no venting, no disassembly, no rupture and no fire and if the open circuit voltage of each test cell or battery after testing is not less than 90% of its voltage immediately prior to this procedure. The requirement relating to voltage is not applicable to test cells and batteries at fully discharged states.

#### T.5 External short circuit

The cell or battery to be tested shall be heated for a period of time necessary to reach a homogeneous stabilized temperature of  $57 \pm 4^\circ\text{C}$ , measured on the external case. This period of time depends on the size and design of the cell or battery and should be assessed and documented. If this assessment is not feasible, the exposure time shall be at least 6 hours for small cells and small batteries, and 12 hours for large cells and large batteries. Then the cell or battery at  $57 \pm 4^\circ\text{C}$  shall be subjected to one short circuit condition with a total external resistance of less than 0.1 ohm. This short circuit condition is continued for at least one hour after the cell or battery external case temperature has returned to  $57 \pm 4^\circ\text{C}$ , or in the case of the large batteries, has decreased by half of the maximum temperature increase observed during the test and remains below that value. The short circuit and cooling down phases shall be conducted at least at ambient temperature.

Cells and batteries meet this requirement if their external temperature does not exceed  $170^\circ\text{C}$  and there is no disassembly, no rupture and no fire during the test and within six hours after the test.

www.ponytest.com

©Hotline 400-819-5688

北京实验室: (010) 82618116

长春实验室: (0431) 85150908

上海实验室: (021) 64851999

深圳实验室: (0755) 26050909

青岛实验室: (0532) 88706866

哈尔滨实验室: (0451) 88104651

宁波实验室: (0574) 87736499

广州实验室: (020) 89224310

天津实验室: (022) 27360730

大连实验室: (0411) 84650820

杭州实验室: (0571) 87219096

武汉实验室: (027) 83997127

新疆实验室: (0991) 6684186

郑州实验室: (0371) 69350670

苏州实验室: (0512) 62997900

厦门实验室: (0592) 5568048



Pony Testing International Group

#### T.6 Impact / Crush

Impact (applicable to cylindrical cells not less than 18 mm in diameter)

The test sample cell or component cell is to be placed on a flat smooth surface. A 15.8 mm  $\pm$  0.1mm diameter, at least 6 cm long, or the longest dimension of the cell, whichever is greater, Type 316 stainless steel bar is to be placed across the centre of the sample. A 9.1 kg  $\pm$  0.1 kg mass is to be dropped from a height of 61  $\pm$  2.5 cm at the intersection of the bar and sample in a controlled manner using a near frictionless, vertical sliding track or channel with minimal drag on the falling mass. The vertical track or channel used to guide the falling mass shall be oriented 90 degrees from the horizontal supporting surface.

The test sample is to be impacted with its longitudinal axis parallel to the flat surface and perpendicular to the longitudinal axis of the 15.8 mm  $\pm$  0.1mm diameter curved surface lying across the centre of the test sample. Each sample is to be subjected to only a single impact.

Crush (applicable to prismatic, pouch, coin/button cells and cylindrical cells less than 18 mm in diameter)

A cell or component cell is to be crushed between two flat surfaces. The crushing is to be gradual with a speed of approximately 1.5 cm/s at the first point of contact. The crushing is to be continued until the first of the three options below is reached.

- (a) The applied force reaches 13 kN  $\pm$  0.78 kN;
- (b) The voltage of the cell drops by at least 100 mV; or
- (c) The cell is deformed by 50% or more of its original thickness.

Once the maximum pressure has been obtained, the voltage drops by 100 mV or more, or the cell is deformed by at least 50% of its original thickness, the pressure shall be released.

A prismatic or pouch cell shall be crushed by applying the force to the widest side. A button/coin cell shall be crushed by applying the force on its flat surfaces. For cylindrical cells, the crush force shall be applied perpendicular to the longitudinal axis.

Each test cell or component cell is to be subjected to one crush only. The test sample shall be observed for a further 6 h. The test shall be conducted using test cells or component cells that have not previously been subjected to other tests.

Cells and component cells meet this requirement if their external temperature does not exceed 170 °C and there is no disassembly and no fire during the test and within six hours after this test.

#### T.7 Overcharge

The charge current shall be twice the manufacturer's recommended maximum continuous charge current. The minimum voltage of the test shall be as follows:

www.ponytest.com ©Hotline 400-819-5688

北京实验室: (010) 82618116 长春实验室: (0431) 85150908 上海实验室: (021) 64851999 深圳实验室: (0755) 26050909  
 青岛实验室: (0532) 88706866 哈尔滨实验室: (0451) 88104651 宁波实验室: (0574) 87736499 广州实验室: (020) 89224310  
 天津实验室: (022) 27360730 大连实验室: (0411) 84650820 杭州实验室: (0571) 87219096 武汉实验室: (027) 83997127  
 新疆实验室: (0991) 6684186 郑州实验室: (0371) 69350670 苏州实验室: (0512) 62997900 厦门实验室: (0592) 5568048



Pony Testing International Group

- (a) When the manufacturer's recommended charge voltage is not more than 18V, the minimum voltage of the test shall be the lesser of two times the maximum charge voltage of the battery or 22V.
- (b) When the manufacturer's recommended charge voltage is more than 18V, the minimum voltage of the test shall be 1.2 times the maximum charge voltage.

Tests are to be conducted at ambient temperature; the duration of the test shall be 24 hours.

Rechargeable batteries meet this requirement if there is no disassembly and no fire during the test and within seven days after the test.

#### T.8 Forced discharge

Each cell shall be forced discharged at ambient temperature by connecting it in series with a 12V D.C. power supply at an initial current equal to the maximum discharge current specified by the manufacturer.

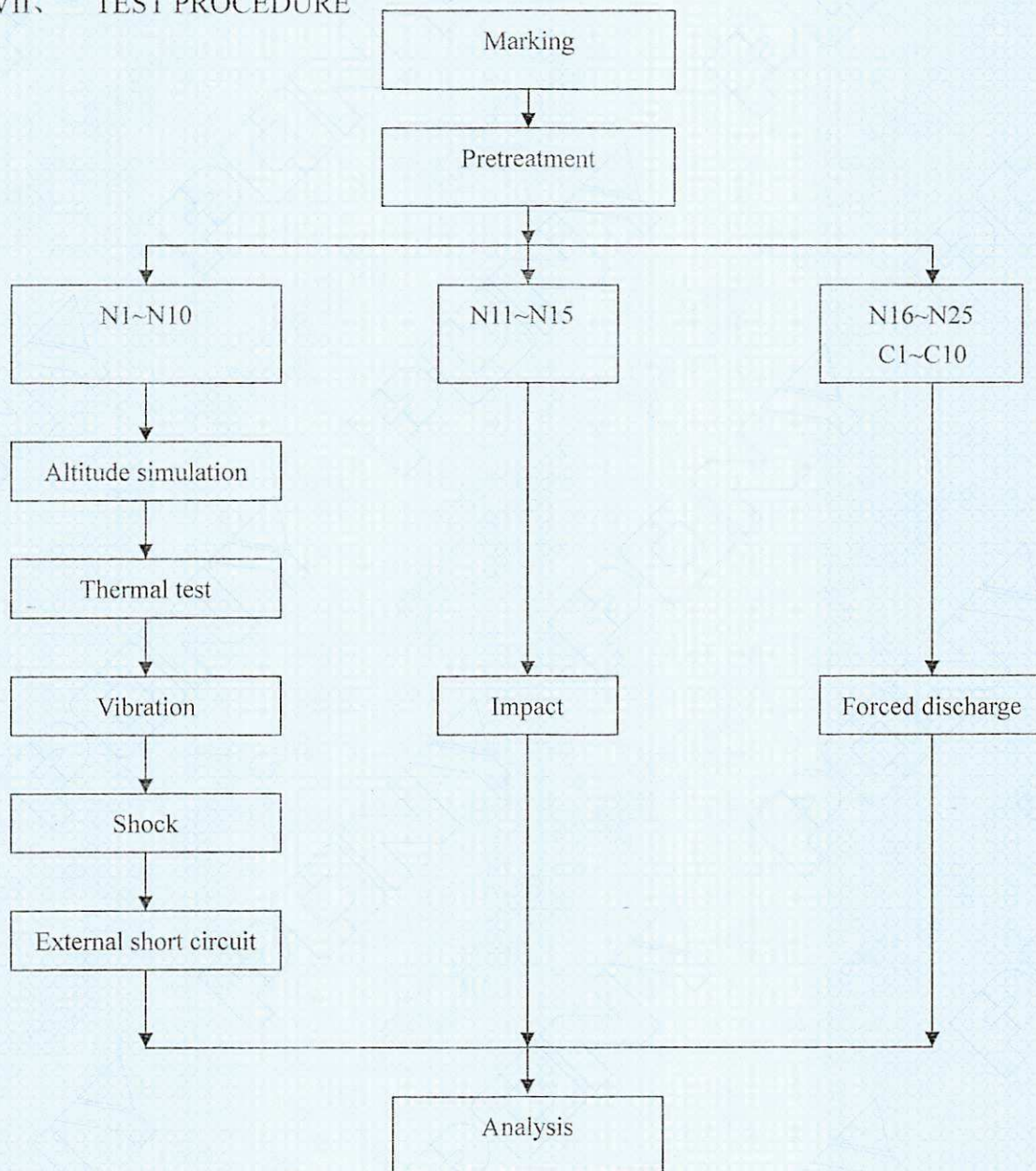
The specified discharge current is to be obtained by connecting a resistive load of the appropriate size and rating in series with the test cell. Each cell shall be forced discharged for a time interval (in hours) equal to its rated capacity divided by the initial test current (in ampere).

Primary or rechargeable cells meet this requirement if there is no disassembly and no fire during the test and within seven days after the test.



Pony Testing International Group

## VII、 TEST PROCEDURE



## VIII、 TEST APPARATUS

IE-0121 Rechargeable battery test system

IE-0434 Vacuum chamber

IE-0090 Digital multimeter

IE-0259 Electronic balance

IE-0328 Temperature change chamber

IE-0503 Electrodynamamic type vibration test instrument

IE-0077 TPR series high precision DC regulated power supply

IE-0287 Shock test instrument

IE-0281 Temperature control circuit tester

IE-0185 Thermoelectric pair

IE-0506 Battery impact test instrument

[www.ponytest.com](http://www.ponytest.com)

©Hotline 400-819-5688

北京实验室: (010) 82618116

青岛实验室: (0532) 88706866

天津实验室: (022) 27360730

新疆实验室: (0991) 6684186

长春实验室: (0431) 85150908

哈尔滨实验室: (0451) 88104651

大连实验室: (0411) 84650820

郑州实验室: (0371) 69350670

上海实验室: (021) 64851999

宁波实验室: (0574) 87736499

杭州实验室: (0571) 87219096

苏州实验室: (0512) 62997900

深圳实验室: (0755) 26050909

广州实验室: (020) 89224310

武汉实验室: (027) 83997127

厦门实验室: (0592) 5568048



Pony Testing International Group

## IX、 DATA

## 1. Altitude simulation

No.	Pre-test		After test		Mass loss (%)	Voltage loss (%)	Whether leakage, venting, disassembly, rupture, fire (Y/N)
	Mass (g)	Voltage (V)	Mass (g)	Voltage (V)			
N1	16.451	3.541	16.450	3.531	0.006	0.282	N
N2	16.654	3.540	16.654	3.531	0.000	0.254	N
N3	16.449	3.544	16.449	3.534	0.000	0.282	N
N4	16.458	3.548	16.458	3.538	0.000	0.282	N
N5	16.820	3.542	16.820	3.532	0.000	0.282	N
N6	16.491	3.545	16.490	3.536	0.006	0.254	N
N7	16.429	3.548	16.429	3.537	0.000	0.310	N
N8	16.482	3.542	16.481	3.531	0.006	0.311	N
N9	16.409	3.534	16.409	3.526	0.000	0.226	N
N10	16.319	3.541	16.319	3.531	0.000	0.282	N

## 2. Thermal test

No.	Pre-test		After test		Mass loss (%)	Voltage loss (%)	Whether leakage, venting, disassembly, rupture, fire (Y/N)
	Mass (g)	Voltage (V)	Mass (g)	Voltage (V)			
N1	16.450	3.531	16.422	3.324	0.170	5.862	N
N2	16.654	3.531	16.631	3.324	0.138	5.862	N
N3	16.449	3.534	16.426	3.320	0.140	6.055	N
N4	16.458	3.538	16.434	3.321	0.146	6.133	N
N5	16.820	3.532	16.793	3.326	0.161	5.832	N
N6	16.490	3.536	16.477	3.321	0.079	6.080	N
N7	16.429	3.537	16.409	3.322	0.122	6.079	N
N8	16.481	3.531	16.461	3.323	0.121	5.891	N
N9	16.409	3.526	16.383	3.322	0.158	5.786	N
N10	16.319	3.531	16.290	3.325	0.178	5.834	N



Pony Testing International Group

## 3. Vibration

No.	Pre-test		After test		Mass loss (%)	Voltage loss (%)	Whether leakage, venting, disassembly, rupture, fire (Y/N)
	Mass (g)	Voltage (V)	Mass (g)	Voltage (V)			
N1	16.422	3.324	16.412	3.324	0.061	0.000	N
N2	16.631	3.324	16.621	3.322	0.060	0.060	N
N3	16.426	3.320	16.416	3.320	0.061	0.000	N
N4	16.434	3.321	16.412	3.318	0.134	0.090	N
N5	16.793	3.326	16.781	3.321	0.071	0.150	N
N6	16.477	3.321	16.457	3.316	0.121	0.151	N
N7	16.409	3.322	16.396	3.321	0.079	0.030	N
N8	16.461	3.323	16.441	3.322	0.121	0.030	N
N9	16.383	3.322	16.371	3.322	0.073	0.000	N
N10	16.290	3.325	16.280	3.323	0.061	0.060	N

## 4. Shock

No.	Pre-test		After test		Mass loss (%)	Voltage loss (%)	Whether leakage, venting, disassembly, rupture, fire (Y/N)
	Mass (g)	Voltage (V)	Mass (g)	Voltage (V)			
N1	16.412	3.324	16.412	3.324	0.000	0.000	N
N2	16.621	3.322	16.621	3.322	0.000	0.000	N
N3	16.416	3.320	16.416	3.320	0.000	0.000	N
N4	16.412	3.318	16.412	3.318	0.000	0.000	N
N5	16.781	3.321	16.781	3.321	0.000	0.000	N
N6	16.457	3.316	16.457	3.316	0.000	0.000	N
N7	16.396	3.321	16.396	3.321	0.000	0.000	N
N8	16.441	3.322	16.441	3.322	0.000	0.000	N
N9	16.371	3.322	16.371	3.322	0.000	0.000	N
N10	16.280	3.323	16.280	3.323	0.000	0.000	N



Pony Testing International Group

## 5. External short circuit

No.	Peak temperature (°C)	Whether disassembly, rupture, fire (Y/N)
N1	79.6	N
N2	78.3	N
N3	77.4	N
N4	79.3	N
N5	75.4	N
N6	73.6	N
N7	80.1	N
N8	76.3	N
N9	79.4	N
N10	78.3	N

## 6. Impact

No.	Peak temperature (°C)	Whether disassembly, fire (Y/N)
N11	74.5	N
N12	72.9	N
N13	73.4	N
N14	74.1	N
N15	74.0	N

## 7. Overcharge

N/A



Pony Testing International Group

## 8. Forced discharge

No.	Whether disassembly, fire (Y/N)
N16	N
N17	N
N18	N
N19	N
N20	N
N21	N
N22	N
N23	N
N24	N
N25	N
C1	N
C2	N
C3	N
C4	N
C5	N
C6	N
C7	N
C8	N
C9	N
C10	N

\*\*\* End of report \*\*\*