

IntelliCare Hybrid Dispenser



UNITED STATES

8215 Forest Point Blvd
Charlotte NC 28273
USA
Phone: +1 (980) 221-3236
www.sealedair.com

CANADA

Address: 3755 Laird Road
Mississauga, Ontario
L5L 0B3 Canada
Phone: +1 (905) 829-1200
www.sealedair.com

EUROPE

Maarssebroeksedijk 2
NL - 3542DN Utrecht
The Netherlands
Phone: +31 (0)30 247 6911
www.sealedair.com

I.1 MOUNTING DISPENSER

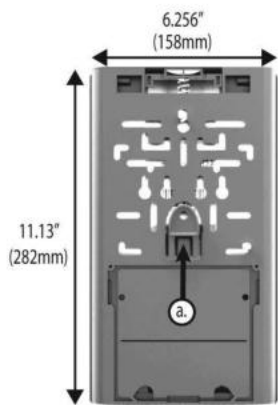
NOTE: SEE KEY DISPENSER DIMENSIONS BELOW (1.2). IF INSTALLING WITH DRIP-CATCH, SEE CRITICAL DIMENSIONS BELOW (1.5)

1. Remove key from back of housing. (Reference 'Key Location' in section 1.2, below)
2. The dispenser should be mounted at least 12 inches (30.5cm) above the counter-top, sink or other surface.
3. If an object remains in the dispenser infrared (IR) sensing range for more than 10 seconds, the white 'PUSH the COVER' decal and GREEN LED will blink and no soap will be dispensed. Once the object is NO longer in 'view' of the IR (at bottom of dispenser), the dispenser will operate normally.
4. If replacing soap dispenser on wall, determine if any of the holes match up on the Sealed Air unit. Unit designed to at least partially match numerous soap dispensers.
5. Mount the dispenser to wall using proper mounting hardware for your particular wall composition. Go to section 3.0 for specific dispenser mounting instructions.

NOTE : TAPE & SCREWS/ANCHORS ARE PROVIDED. DISCLAIMER : If refills (Soap) used other than certified SA soap, SA is not responsible for any dispenser issues.

I.2 DIMENSIONS, KEY LOCATION, OPENING & CLOSING DISPENSER

****KEY OUTER DIMENSIONS OF DISPENSER : (H)11.13" [282MM] x (W)6.256" [158MM] x (D)4" [101.6mm]**



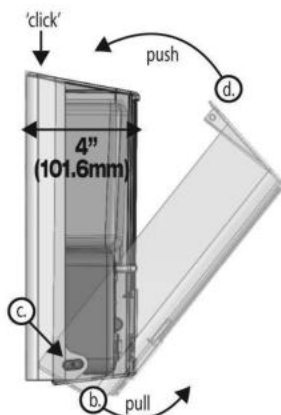
KEY LOCATION

Remove cover key (a) from back of housing.



OPENING COVER

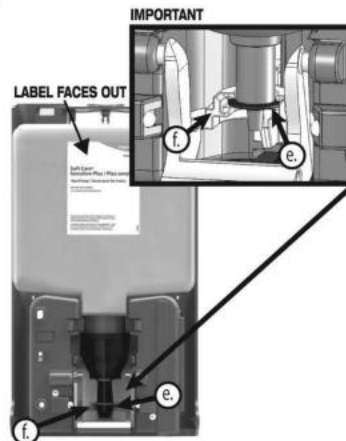
Insert key in to holes on top of cover. Pull cover forward to open.



CLOSING COVER

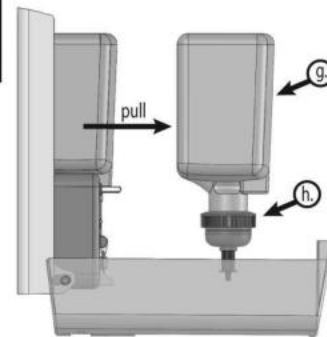
To close the cover, pull cover from bottom (b) so that bottom hinge (c) is pulled all the way OUT, then PUSH the top of cover closed to 'click' shut (d).

I.3 REFILL PLACEMENT & REMOVAL



TO INSERT REFILL

Push refill in to place to ensure the FLANGE of the Soap Nozzle (e) is seated into the correct location (f). If not, the dispenser will not pump correctly.



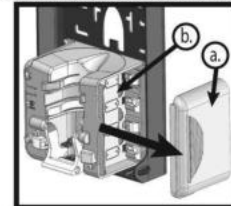
TO REMOVE REFILL

Pull the Container (g) and the Pump Housing (h). Please recycle accordingly.

I.4 BATTERY INSTALLATION

1. Insert Sealed Air key (or other item that fits the key hole) at top of cover and pull cover. You now have access to Electronic Module and Batteries.
2. Remove the battery cover ('a' - by PULLING cover toward the front) located on the right side of the module (see x-1). Insert 4 C-cell alkaline batteries* (not included) making sure to place the batteries in the proper orientation as shown by the diagram in the battery compartment (b). Replace the battery cover. **Rechargeable batteries are not to be used. Do not use different types of batteries. New and used batteries are not to be mixed.**
3. The dispenser will turn "on" automatically once batteries are installed. You will get a quick flash of the PUSH icon (x-2) followed immediately by a flash of the GREEN LED (c) indicating the unit is functional. **NOTE: Low Refill counter will NOT be affected when changing batteries.**
4. When the batteries become too low for the dispenser to function, the "PUSH" icon will illuminate conveying the unit to be used in manual mode (see x-2) and indicates that the batteries need to be replaced.
5. Exhausted batteries are to be removed from the dispenser and safely disposed of. If the dispenser is to be stored unused for a long period of time, remove the batteries.

x-1 REMOVING BATTERY COVER

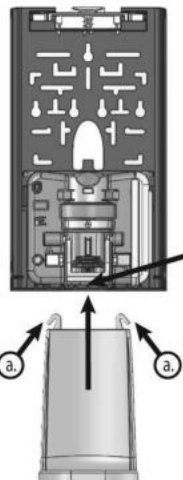


x-2 MANUAL MODE PUSH ICON

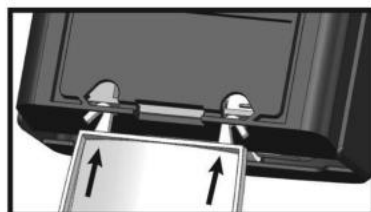


I.5 OPTIONAL DRIP-CATCH INSTALLATION

FRONT VIEW



REAR VIEW BOTTOM

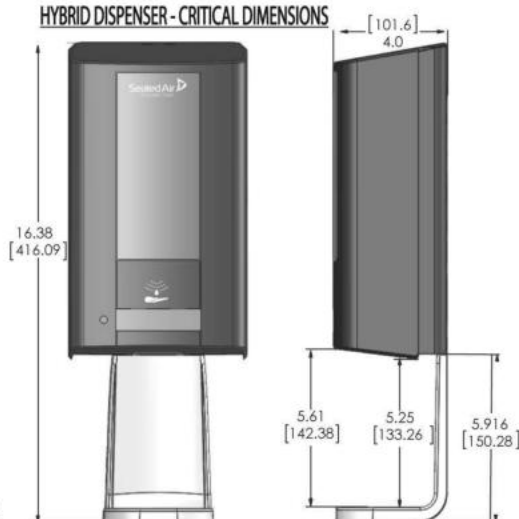


Insert drip catch hooks (a) through rectangular slots located at the bottom rear of the dispenser. The Drip-Catch with SNAP into place.

NOTE: The Drip Catch is not designed to be removed. However, if going to remove for cleaning please be careful not to damage the dispenser. The drip catch also might be damaged after removing.

DISCLAIMER: If other drip catch used, Sealed Air not responsible for damage.

HYBRID DISPENSER - CRITICAL DIMENSIONS



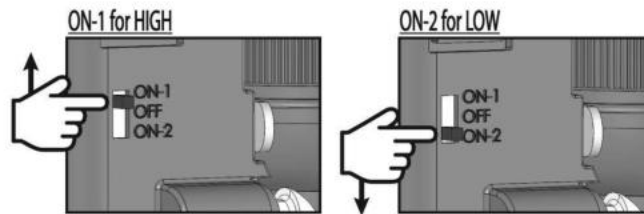
DRIP-CATCH ATTACHED



2.1 ELECTRONIC SET UP, ACTIVATION & EXPLANATION

Electronic Dosing:

- Choose size of dose required (ON-1 for HIGH or ON-2 for LOW). See images to the right.
- The supply terminals are not to be short-circuited.
- Keep the IR lens clean.



Manual Dosing:

To activate dispenser in manual mode; push the bottom, center of the cover.

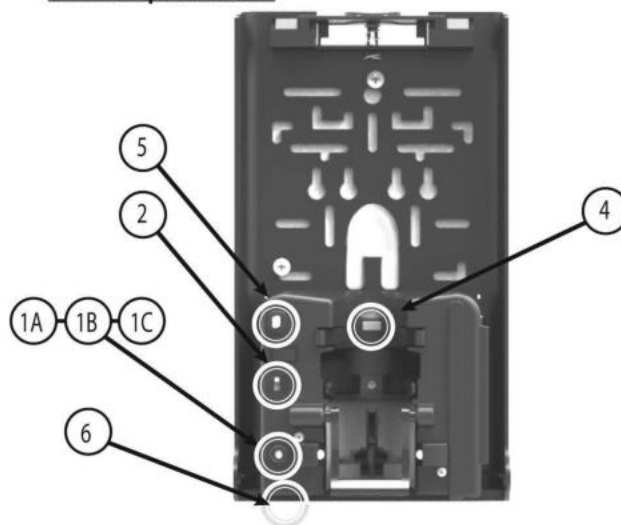
Electronic Component and LED (Light) Explanation (see corresponding images below the matrix for further clarification)

#	ELECTRONIC COMPONENT	ACTION	DESCRIPTION
1A	Power indicator	Blinking Green LED (every 3 sec)	Standby mode, dispenser waiting to be used
1B	Object In View Indicator	Alternating GREEN Blink with Blinking of 'Low Battery Indicator' (#3)	Object in VIEW of dispenser for MORE than 10 Seconds. Remove object to re-start dosing.
1C	Low Refill Indicator	RED LED blinks every 1 Second	Refill is Low
2	ON / OFF & Dose Control Switch	Control Dose Amount per Use	ON - 1: FOR HIGH / ON - 2: FOR LOW
3	Low Battery Indicator	Blinking Illuminating "PUSH" decal	Batteries LOW / Install New Batteries
4	Refill Counter Switch (RED)	Activated when Refill Inserted	Each time refill inserted, the DOSE Count begins to ensure Low Refill Indicator (1C) blinks at the appropriate time
5	Cover Open Switch (RED)	Extends when Cover Open	Ensures that NO product is dosed when cover is OPEN
6	IR Lens	Senses Hand to Automatically Dose Soap	Keep Clean

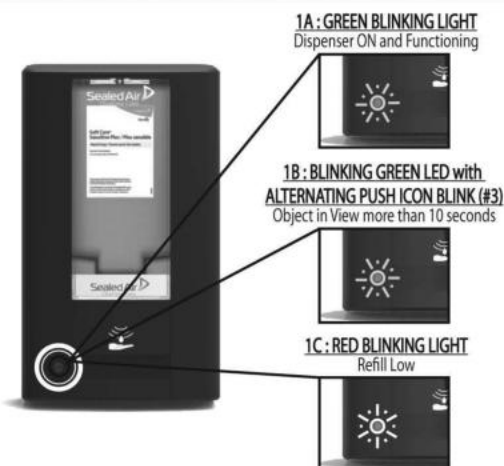
Front Cover View



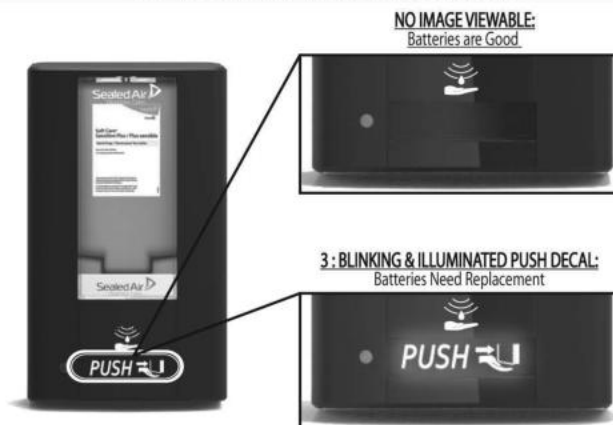
Inside Dispenser View



2.2 POWER & LOW REFILL INDICATOR



2.3 LOW BATTERY INDICATOR



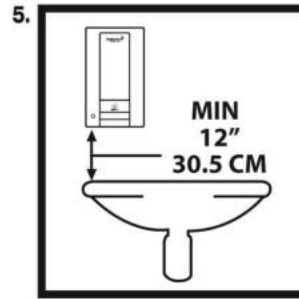
CAUTION:

- Instructions are provided for safe use of the dispenser.
- This dispenser can be used by children aged from 8 years and above and persons with reduced physical, sensory and mental capabilities or lack of experience and knowledge if they have been given supervision or instruction concerning use of the dispenser in a safe way and understand the hazards involved. Children shall not play with the dispenser. Cleaning and user maintenance shall not be made by children without supervision.

3.0 DISPENSER MOUNTING INSTRUCTIONS

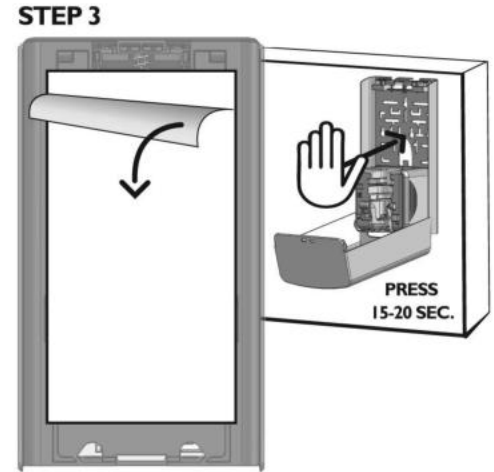
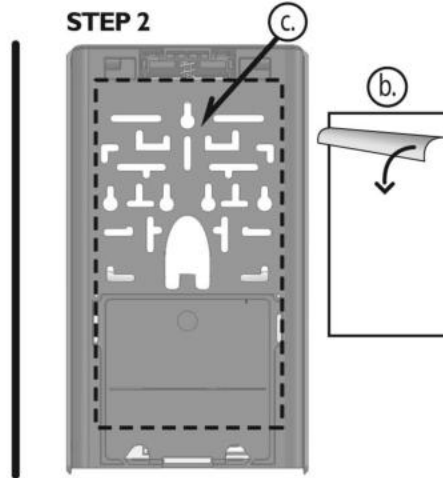
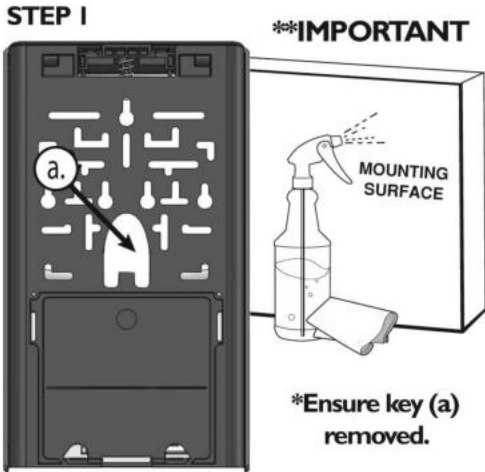
1. Ensure the Key is removed from the housing. See Step 1 under 3.1 Below.
2. The dispenser should be mounted 12 inches (30.5 cm) above the counter-top, sink or other surface.
3. If replacing soap dispenser on wall, determine if any of the holes match up on the Sealed Air unit. Unit is designed to at least partially match numerous soap dispensers.
4. Mount the dispenser to wall using proper mounting hardware for your particular wall composition. See 3.1 (Tape Mounting Instructions) and 3.2 (Screw Mounting Instructions)

NOTE: Tape can be used effectively for installations on mirrors and tile.



The dispenser should be mounted 12" (30.5 CM) above the counter-top, sink or other surface. If an object remains in the sensing range for more than 10 seconds, the white and green LED will begin blinking and no soap will be dispensed after the initial dose. Remove object and unit will operate normally.

3.1 TAPE MOUNTING INSTRUCTIONS



Step 1: Tape mounting is recommended for mirror installations.

For tile or other wall installations, anchor & screw mounting is recommended.

If tape mounting is the only option, thoroughly clean the mounting surface (wall) using the supplied alcohol wipe and make sure all dirt, grease and surface film is removed.

After cleaning, ensure the mounting surface is given time to completely dry, or wipe dry with a clean paper towel before attaching the dispenser to the wall.

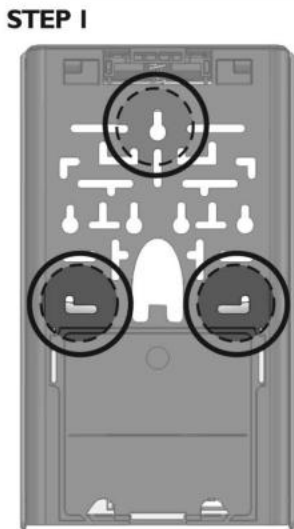
Step 2: Remove the white paper from the one side of the Tape (b).

Place tape pad in the area shown with the black dotted lines (c).

Step 3: Remove the red backing from the tape. Ensure that the dispenser is in a level position on the wall, open cover and press the dispenser firmly for 15 to 20 seconds to allow it to properly adhere to wall.

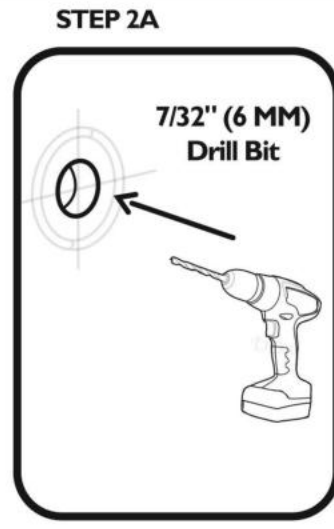
It's recommended to let the dispenser set up for 24 hours before installing the refill.

3.2 SCREW MOUNTING INSTRUCTIONS



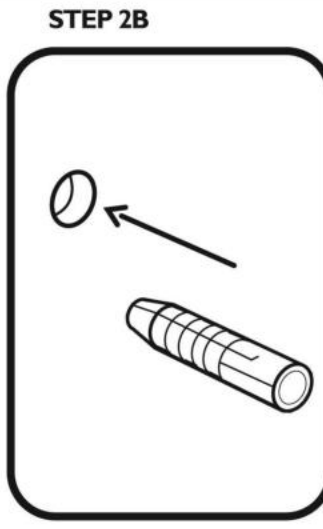
Step 1: The Dispenser housing provides numerous mounting locations. If replacing a competitive unit, determine if one (or more) of the holes match.

If no holes exist on wall or do not properly match, we suggest using the three holes circled above.

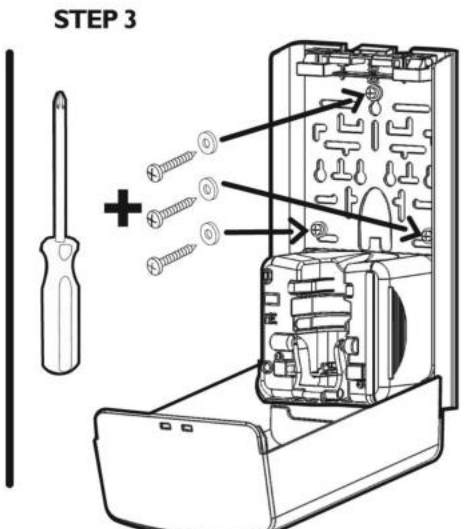


Step 2A: Use a 7/32" (6 MM) drill bit to bore the holes on the wall for the anchors, washers and screws provided.

NOTE: Ensure that proper mounting hardware is used for your particular wall composition.



Step 2B: Insert anchors into all three holes.



Step 3: Insert the washers over the screws and then use a screwdriver to insert the screws in to the anchors and tighten the dispenser securely against the wall.